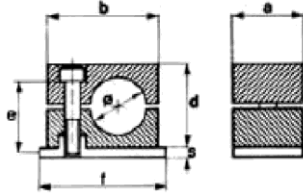


**STANDARD CLAMPS**

Material : Polypropylene

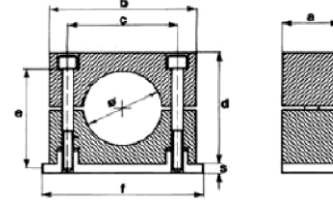
gruppo  
group 0



**COLLARE STANDARD**

Materiale : Polypropylene

gruppo  
group 1÷6



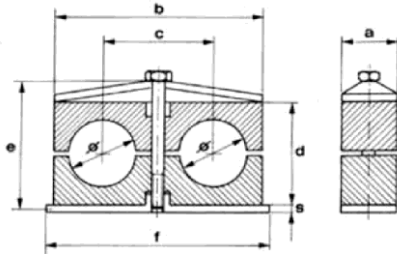
Partnr. codice	ØOD		Group Gruppo	a		b		c		Gruppo	d		e
	[in]	[mm]		[in]	[mm]	[in]	[mm]	[in]	[mm]		[in]	[mm]	
0170050006	0,24	6,0	0	1,18	30,0	1,10	28,0	-	-	1,06	27,0	M6-20	
0170050008	0,32	8,0	0	1,18	30,0	1,10	28,0	-	-	1,06	27,0	M6-20	
0170050010	0,39	10,0	0	1,18	30,0	1,10	28,0	-	-	1,06	27,0	M6-20	
0170050012	0,47	12,0	0	1,18	30,0	1,10	28,0	-	-	1,06	27,0	M6-20	
0170060006	0,24	6,0	1	1,18	30,0	1,34	34,0	0,79	20,0	1,06	27,0	M6-20	
0170060008	0,32	8,0	1	1,18	30,0	1,34	34,0	0,79	20,0	1,06	27,0	M6-20	
0170060010	0,39	10,0	1	1,18	30,0	1,34	34,0	0,79	20,0	1,06	27,0	M6-20	
0170060012	0,47	12,0	1	1,18	30,0	1,34	34,0	0,79	20,0	1,06	27,0	M6-20	
0170070014	0,55	14,0	2	1,18	30,0	1,58	40,0	1,02	26,0	1,30	33,0	M6-25	
0170070015	0,59	15,0	2	1,18	30,0	1,58	40,0	1,02	26,0	1,30	33,0	M6-25	
0170070016	0,63	16,0	2	1,18	30,0	1,58	40,0	1,02	26,0	1,30	33,0	M6-25	
0170070018	0,71	18,0	2	1,18	30,0	1,58	40,0	1,02	26,0	1,30	33,0	M6-25	
0170080020	0,79	20,0	3	1,18	30,0	1,89	48,0	1,30	33,0	1,38	35,0	M6-30	
0170080022	0,87	22,0	3	1,18	30,0	1,89	48,0	1,30	33,0	1,38	35,0	M6-30	
0170080025	0,99	25,0	3	1,18	30,0	1,89	48,0	1,30	33,0	1,38	35,0	M6-30	
0170090028	1,10	28,0	4	1,18	30,0	2,25	57,0	1,58	40,0	1,65	42,0	M6-35	
0170090030	1,18	30,0	4	1,18	30,0	2,25	57,0	1,58	40,0	1,65	42,0	M6-35	
0170090032	1,26	32,0	4	1,18	30,0	2,25	57,0	1,58	40,0	1,65	42,0	M6-35	
0170100035	1,38	35,0	5	1,18	30,0	2,68	68,0	2,05	52,0	2,29	58,0	M6-50	
0170100038	1,50	38,0	5	1,18	30,0	2,68	68,0	2,05	52,0	2,29	58,0	M6-50	
0170100042	1,65	42,0	5	1,18	30,0	2,68	68,0	2,05	52,0	2,29	58,0	M6-50	
0170100045	1,77	45,0	5	1,18	30,0	2,68	68,0	2,05	52,0	2,29	58,0	M6-50	
017012	1,89	48,0	6	1,18	30,0	3,39	86,0	2,60	66,0	2,60	66,0	M6-60	

**DOUBLE CLAMPS**

Material: Polypropylene

**COLLARE DOPPIO**

Materiale: Polypropylene

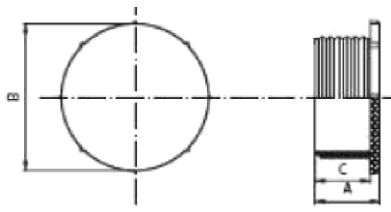


partnr. codice	ØOD [in]	Group [mm]	aGr uppo	b [in]	c [mm]	d [in]	e [mm]	partnr. codice	ØOD [in]	Group [mm]	aGr uppo	b [in]
0170120008	0,32	8,0	1	1,18	30,0	1,46	37,0	0,79	20,0	0,99	25,0	M6-35
0170120012	0,47	12,0	1	1,18	30,0	1,46	37,0	0,79	20,0	0,99	25,0	M6-35
0170130014	0,55	14,0	2	1,18	30,0	2,09	53,0	1,14	29,0	1,02	26,0	M8-35
0170130016	0,63	16,0	2	1,18	30,0	2,09	53,0	1,14	29,0	1,02	26,0	M8-35
0170130018	0,71	18,0	2	1,18	30,0	2,09	53,0	1,14	29,0	1,02	26,0	M8-35
0170130020	0,79	20,0	3	1,18	30,0	2,64	67,0	1,42	36,0	1,46	37,0	M8-45
0170130022	0,87	22,0	3	1,18	30,0	2,64	67,0	1,42	36,0	1,46	37,0	M8-45
0170130028	1,10	28,0	4	1,18	30,0	3,23	82,0	1,77	45,0	1,65	42,0	M8-50
0170130030	1,18	30,0	4	1,18	30,0	3,23	82,0	1,77	45,0	1,65	42,0	M8-50
0170130033	1,33	33,7	5	1,18	30,0	4,18	106,0	2,21	56,0	2,13	54,0	M8-60
0170130035	1,38	35,0	5	1,18	30,0	4,18	106,0	2,21	56,0	2,13	54,0	M8-60

Part nr. codice	Size dimensione	A [in]	A [mm]	B [in]	B [mm]
<i>To protect Male Thread/ Protezione Filetto Maschio</i>					
0170151017	3/8"	0,43	11,0	0,75	19,0
0170151021	1/2"	0,55	14,0	0,91	23,0
0170151027	3/4"	0,87	22,0	1,16	29,5
0170151033	1"	0,85	21,5	1,44	36,5
0170151042	1.1/4"	0,93	23,5	1,77	45,0
0170151048	1.1/2"	1,12	28,5	1,99	50,5
0170151051	2"	1,08	27,5	2,46	62,5

**BSPMALEPLUG**  
Available also for other thread type

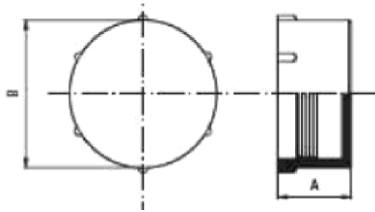
**TAPPOMASCHIOBSP**  
Sono disponibili i per altri tipi di filetto



partnr. codice	size dimensione	A		B		C	
		[in]	[mm]	[in]	[mm]	[in]	[mm]
<i>TopprotectFemaleThread/ProtezioneFilettoFemmina</i>							
0170141017	3/8"	0,57	14,5	0,77	19,5	0,35	9,0
0170141021	1/2"	0,59	15,0	1,00	25,5	0,35	9,0
0170141027	3/4"	0,67	17,0	1,18	30,0	0,43	11,0
0170141033	1"	0,61	15,5	1,48	37,5	0,39	10,0
0170141042	1.1/4"	0,69	17,5	1,85	47,0	0,41	10,5
0170141048	1.1/2"	0,65	16,5	2,13	54,0	0,41	10,5
0170141051	2"	0,67	17,0	1,18	30,0	0,43	11,0

**BSP FEMALE PLUG**  
Available also for other thread type

**TAPPO FEMMINA BSP**  
Sono disponibili per altri tipi di filetto

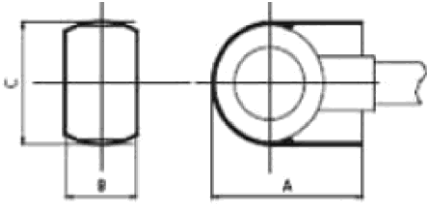


**PLUGFORBANJO**

Available also for other thread type

**TAPPOACAPPUCCIO**

Sono di sponibili per altri tipi di filetto



partnr. codice	sizedim ensione	A		B		C	
		[in]	[mm]	[in]	[mm]	[in]	[mm]
0170162013	1/4"	0,67	17,0	0,32	8,0	0,65	16,5
0170162017	3/8"	0,79	20,0	0,39	10,0	0,77	19,5
0170162021	1/2"	1,12	28,5	0,57	14,5	1,02	26,0
0170162027	3/4"	1,28	32,5	0,65	16,5	1,18	30,0
0170162033	1"	1,73	44,0	1,00	25,5	1,64	41,5

GAUGES GO/NOTGO

TAMPONI PASSA/NONPASSA



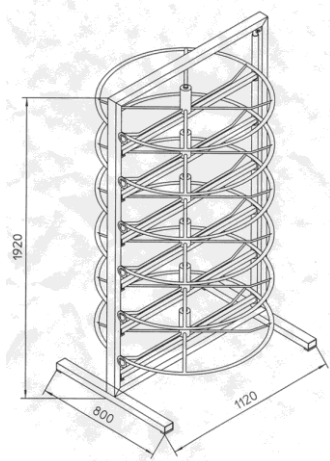
<i>partnr.</i>	<i>Hose</i>
<i>codice</i>	<i>Tubo</i>
0615000000	3/16"-1.1/4"

**HOSE REELS FOR 6 HOSES**

Colour: Blue  
 Capacity: from 3/6" to 1.1/4"  
 Max load for each cradle: 70kg  
 Every cradle is provided of a side opening to facilitate the load/unload of the hose  
 Weight: 100kg

**PORTA TUBO GIREVOLE 6 POSTI**

Colore: Blu  
 Capacità : da 3/16" a 1/4"  
 Carico Massimo per ogni cestello: 70kg  
 Ogni cestello è dotato di un'apertura laterale per facilitare il carico/scarico del tubo  
 Peso: 100kg



<i>partnr.</i>	
<i>codice</i>	
0610000000	HOSE REELS 6 HOSES - PORTA TUBO GIREVOLE 6 POSTI
***	AVAILABLE WITH OR WITHOUT VULCOLAN WHEEL / FORNIBILE CON O SENZA RUOTE VULCOLAN

Heat shrink machine horizontal electric 220Volt 700 watt professional steel body for the cap's retraction in pvc.

Ideal for hoses from 1/4 to 111

Weight: 3kg

Dimensions: 480x150mm

Height: 230mm



71100150000

Macchina tappa tubi orizzontale elettrica 220Volt 700 watt corpo in metallo professionale per la retrazione di capsule in pvc.

Ideale per tubi da 1/4 fino a 111

Peso: 3kg

Dimensioni: 480x150mm

Altezza: 230mm

Partnr. codice	HoseODDiametro esterno	Hexsizes Diametro dell'esagono	Cap's lenghtLungh ezzacapsula	Boxquantity Quantitàbox
7110016025	25	12/22	30	1
7110016031	31	24/27	40	1
7110016038	38	30/32	50	1
7110016046	46	32/41	60	1

\*Cap's in heat shrink pvc

\*\*Alternative closing system to the thread plug ideal to reduce their level of stock

\*\*\*Time of retraction about a second

\*Capsule in pvc termoretraibili

\*\*Sistema di chiusura alternativa al tappo filettato atto a ridurre il livello di stock degli stessi

\*\*\*Tempo di retrazione intorno al secondo